

**DOOSAN**

Construction Equipment

# DA30

|  |                             |
|--|-----------------------------|
| Maximum power (ISO 3046)                     | 276 kW (370 HP) @ 2,100 rpm |
| Maximum payload                              | 28 m t                      |
| Body capacity heaped (with/without tailgate) | 17.8 / 16.8 m <sup>3</sup>  |



# ✓ TAKE A TOUR OF THE DA30

DA30

## PRODUCTIVITY

The DA30 offers best-in-class ground clearance & ground bearing pressure. Combined with superior torque at low engine RPM, superior power and traction, we offer you the best productivity.

## OPERATOR'S ENVIRONMENT

Ergonomic controls, most spacious cab in the market, high-class seat, Bluetooth radio with USB, and much more...

## OPERATE AT EASE

Upgraded monitor panel, new control panel for more convenient use, payload meter, rear-view camera, body tip boost button, etc.

## POWER

Scania DC 09 engine : 276 kW (370 HP) at 2100 rpm with electronic exhaust brake.

## NEW QUALITY OF RIDE

New self-leveling, hydro-gas suspension supports soft ride in harsh conditions.

## MANEUVERABILITY

Unique design of rear frame, body, front-mounted differential and transmission make the Doosan machine the most compact ADT in its class, which results in smallest turning radius and outstanding stability.

## AUTOMATIC LIMITED SLIP DIFFERENTIAL

Push 1 button to engage the longitudinal differential lock.



## TOTAL COST OF OWNERSHIP

Doosan ADTs deliver one of the most competitive operation costs, thanks to the combination of fuel-efficient powertrain, proven design, low-maintenance components, overall durability & unmatched traction.

## SAFETY HIGHLIGHTS

Gradient meter with body flip-over protection, Over Centre of Gravity function, all around cab hand rails, superior stability and front cab access.

## BODY

Steel plates with 400 HB hardness. Capacity without/with tailgate: 16.8/17.8 m<sup>3</sup>. Tailgate, body heating & wear plates available as optional equipment.

## DOOSAN CONNECT TELEMATICS

Monitor your fleet online. As standard, Doosan Connect system with dual mode (satellite, GSM). Check productivity, fuel consumption, system warnings, maintenance status, etc.

## BRAKE SYSTEMS

Oil-cooled wet disc brakes (lifetime up to 15,000 hours). Standard electronic engine brake, hydraulic transmission retarder & parking brake.

## NEW DRIVELINE

New limited-slip rear differential and lower running cost, thanks to reduced number of oils and extended transmission oil change interval.

## SERVICE ACCESSIBILITY

New cab tilting system for quick and easy maintenance under the cab.



\* The above image may differ from the actual product.

## THE POWER TO RAISE PRODUCTIVITY

The Doosan ADT concept offers a larger load capacity in all weight categories. Additional load capacity, combined with superior power and traction, improve productivity. The unique advantages of the Doosan ADT's permanent 6-wheel drive, free-swinging rear tandem, front-mounted turning ring, independent front wheel suspension, and sloping rear frame provide excellent driving stability with equal weight distribution and superior traction. The Doosan Articulated Dump Truck is designed to work under very tough conditions and travel up to 55 km/h.



## DESIGN SIMPLICITY

Permanent 6-wheel drive, together with the ground following rear tandem and our special front-mounted turning ring, provide equal power & weight distribution and excellent operating performance. The sloping rear frame provides a lower centre of gravity - improving the ADT's overall stability, and ensuring fast and easy tipping of the body for increased productivity.



Front-mounted articulation hinge

2 limited-slip differentials

1 manual differential lock

Sloping rear frame

Gear-driven tandem axle



## ENGINES – LOWER EMISSIONS / HIGHER TORQUE

Doosan ADTs use only proven, reliable and powerful diesel Scania engines with excellent torque, which achieve low fuel consumption and fulfill Tier2 requirements.

## NEW SELF-LEVELING HYDRO-GAS FRONT SUSPENSION

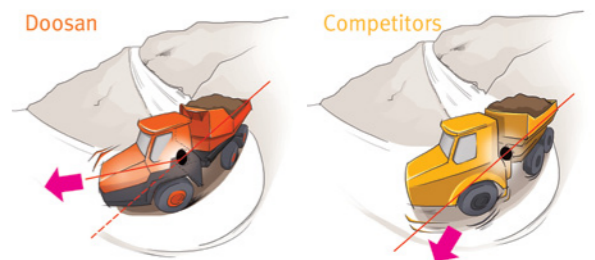
The DA30's design was based on the successful and proven design of the DA40. It has been upgraded with the self-leveling system for better shock absorption in changing operating conditions.

## PAYLOAD METER

Our standard payload & load count meter provides the Doosan operator and owner with an immediate indication of the productivity.

## DOWNHILL SPEED MODULATION

The new electronic engine brake & the hydraulic transmission retarder work simultaneously when dosing the accelerator pedal. On top of that, you can modulate the retarder power by the lever under the steering wheel.



## TRANSPORTABILITY

Thanks to its less than 3-meter width, the DA30 can be moved easily from one site to another.

## FORWARD-MOUNTED TURNING RING

The turning ring is located in front of the articulation point, ensuring equal weight distribution to the front wheels in all operating situations, including maximum turning. The equal weight distribution enables you to use the differential with only 45% locking value - ensuring drive to both front wheels in all situations, without completely locking the wheels.

## NEW REAR DIFFERENTIAL

The rear differential was changed to the limited-slip type to ensure that the wheels have a good grip with the ground at all times.

## TRACTION

The unique Doosan ADT's design offers permanent 6-wheel drive, ensuring stability and equal weight distribution to accommodate all job applications. The Doosan ADTs superior driveline ensures maximum traction and durability.

\* The above image may differ from the actual product.



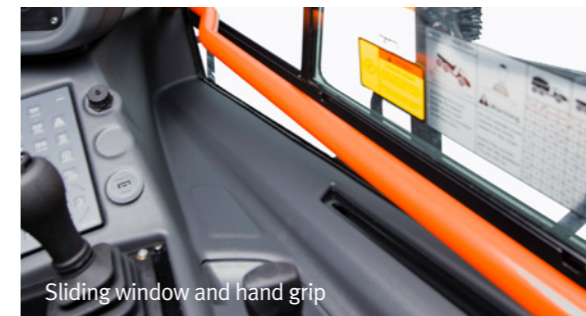
# OPERATE IN COMFORT

# DA30

## QUIETEST TRUCK IN THE INDUSTRY

The spacious ROPS/FOPS cab is equipped with climate control and a high-quality operator seat with air suspension to provide excellent comfort. Precise steering, good visibility, low noise levels (72 dB(A), ISO6395) and optional vertical movement provide additional comfort and quiet.

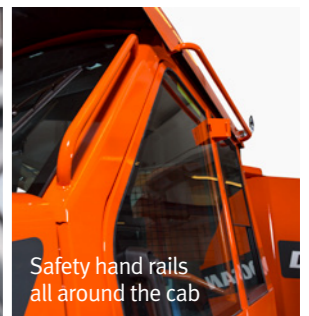
- The sloping hood gives the operator an excellent view
- The cab is mounted on a special rubber suspension to reduce vibration and conduction of noise into the cab



Sliding window and hand grip



Retarder control lever



Safety hand rails all around the cab

## BEST-IN-CLASS OPERATOR ENVIRONMENT

The new DA30 cab was designed based on the feedback received directly from hundreds of Doosan operators. This resulted in upgrade of the cab in features and functions required by the market, including: hand grip on the right side, foot rest, improved storage room, USB charger, Bluetooth radio, all around rails outside the cab, additional lever for retarder control and a number of other new features.

## HIGH-COMFORT AIR-SUSPENSION SEAT

Because a highly comfortable seat means a lot to every operator, we provide an air-suspension seat with armrest as standard.

## ONE KEY SOLUTION

To enter and safely operate your Doosan ADT, you need just 1 key to lock and unlock all the doors and also start the engine.

## SELF-LEVELING, HYDRO-GAS FRONT SUSPENSION

New suspension system has outstanding performance in rough terrain due to big shock absorption capacity of the hydraulic suspension cylinders. On top of that, the self-leveling system can adjust to match changing working conditions.

## STORAGE COMPARTMENTS AND HOT/COOL BOX

Plenty of storage spaces, plus extra room designed to fit cool/hot box with additional 12V power supply.

## MP3, DAB AND BLUETOOTH

Standard radio supports all modern features like MP3, DAB and Bluetooth

## CLIMATE CONTROL

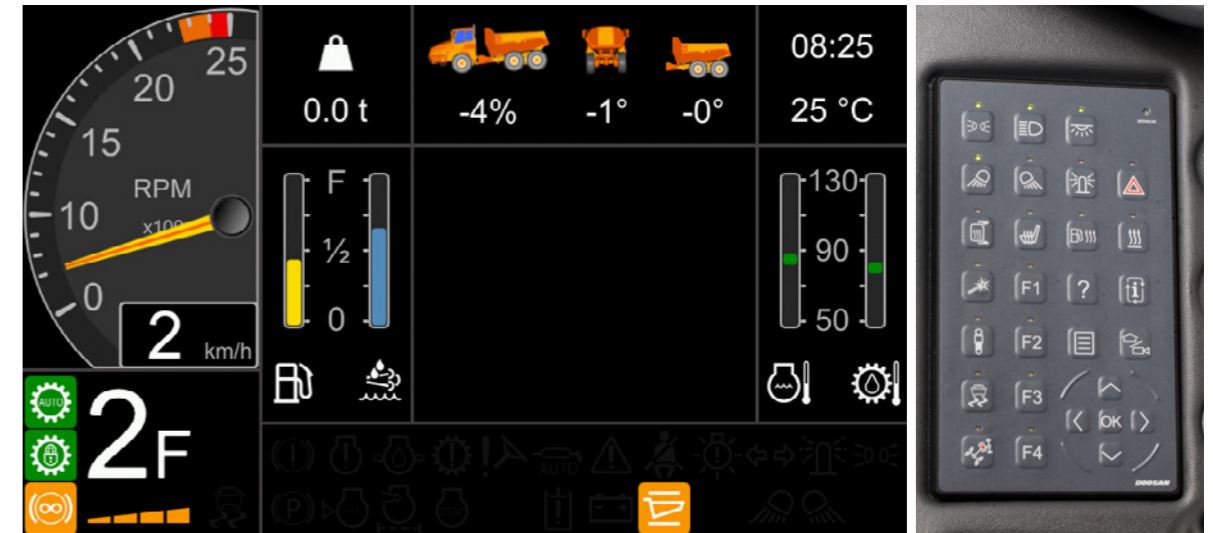
Our specially designed climate control is easy to operate and highly efficient - keeping you comfortable at all times.

\* The above image may differ from the actual product.

## OPERATE AT EASE IN YOUR COMFORT ZONE

The Doosan ADT is one of the industry's simplest trucks to operate and at the same time offers a large number of functions. Comfortably seated in this class-leading operator cab, you'll enjoy easy operation combined with excellent efficiency. And thanks to the upgraded monitor panel, you'll operate in your comfort zone.

- Bigger indications
- Multiple languages
- Integrated payload meter (as standard)
- Diagnostic section with transmission and hydraulic oil level check function
- Gradient meter indication for increased safety while operating
- Integrated rear-view camera



Body hoist lever with boost button



All-round visibility

### LCD COLOR MONITOR PANEL

- 7" color display, resolution 800 x 480 pixels
- Shows all necessary information for driving and handling the machine
- Rear-view camera image embedded in instrumentation graphics
- Backlight dimming according to ambient light conditions
- Sub-menus for additional and diagnostic functions

### TOUCH PAD

- Diesel fuel heater ON/OFF
- Inter-axle differential lock
- Override button
- Cab roof and mirror arm front lights ON/OFF
- Rotating beacon ON/OFF (optional)
- Operating work-lights ON/OFF

### DIFFERENTIAL ACTIVATION

With automatic limited slip differentials, automatic and manual transmission shift, power steering, "simple touchpad" and "easy to read" display, every ADT is as simple to use & operate as possible.

### BODY HOIST LEVER

The new body hoist lever is easy to operate and fingertip controlled. This electronically managed hoist lever incorporates a higher body up speed and an automatic body down feature, with soft touch down, to keep you safe at all times.

### "TIP-TRONIC" GEAR SHIFT

To ensure the smoothest possible gear shifts and momentum, you can run the truck in both automatic and manual gears.

### RETARDER FORCE MODULATION LEVER

New lever located on the right-hand side below the steering wheel enables operator to choose from 4 power modes. On top of that, the gas pedal is responsible for retarder power reduction.



# SIMPLE MAINTENANCE WITH GREAT UPTIME

## DA 30

### EXCELLENT SERVICE ACCESSIBILITY

- The hood's wide opening (up to 83°) provides excellent access to the engine for easy maintenance
- The tilting cab allows the same clear access to the transmission and hydraulic components
- All electrical and AC connections are at the rear of the cab, allowing the cab to be tilted while maintaining connections
- The factory-fitted automatic central lubrication system is fully incorporated in the design of our ADTs. Thanks to the Vehicle Control Unit (VCU), grease is pumped only when necessary
- The new EP transmission is specially designed for easier maintenance



### TRAINING CENTER

Located in the heart of Europe, near Prague (Czech Republic), the Doosan Academy is a dynamic center of knowledge where Product, Service and Doosan University training courses are held. The facilities include a modern building that can accommodate all of the product ranges, and an outdoor training area where we conduct field exercises and product testing with the fleet of Doosan machines and attachments.



### FILTERS

All filters are centralised for quicker and easier accessibility.

### SCR WITH NO DPF

Building further on the success of the Stage IIIB engines, the new Stage IV Scania engine has no need for a DPF filter to meet the Stage IV emissions requirements.



\* The above image may differ from the actual product.

# TELEMATICS SERVICE (OPTIONAL)

# GLOBAL PARTS NETWORK

## TELECOMMUNICATIONS

Data flow from machine to web




**TELEMATICS SERVICE TERMINAL**

Telematics Service terminal is installed to machine / connected to EPOS™



**TELECOMMUNICATION**

GPS, EPOS™ data is sent to designated server by GSM, Satellite telecommunication



**DOOSAN TELEMATICS SERVICE WEB**

Doosan, Dealer, Customer can easily monitor the GPS, EPOS™ data from Core Telematics Service web

## BENEFITS

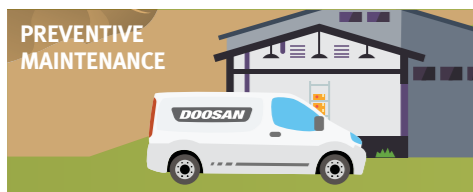
**JOB SITE MANAGEMENT**



**WORK EFFICIENCY MANAGEMENT**



**PREVENTIVE MAINTENANCE**



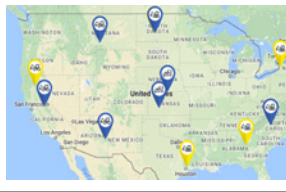
**PROACTIVE SERVICE**



## FUNCTIONS

**Location**

- GPS
- Geo-fence




**Operation Trend**

- Total operation hour
- Operation hour by mode



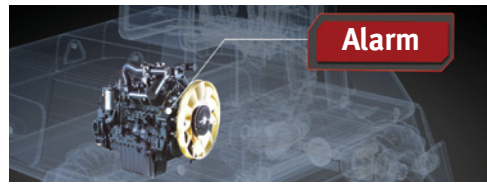
**Filter & Oil Management**

- Preventive maintenance by item replacement cycle




**Warning & Alert**

- Detect machine warnings
- Antenna disconnection
- Geo/Time fence




**Reports**

- Periodic operation report
- Utilization



**Fuel Efficiency\***

- Fuel level
- Fuel consumption




\* Functions may not be applied to all models. Please contact your sales representative to get more information of the service.

## TELEMATICS SERVICE BENEFITS

### Customer

- Improve work efficiency
- Timely and preventive service
- Improve operator's skills by comparing work pattern
- Manage fleet more effectively

### Dealer

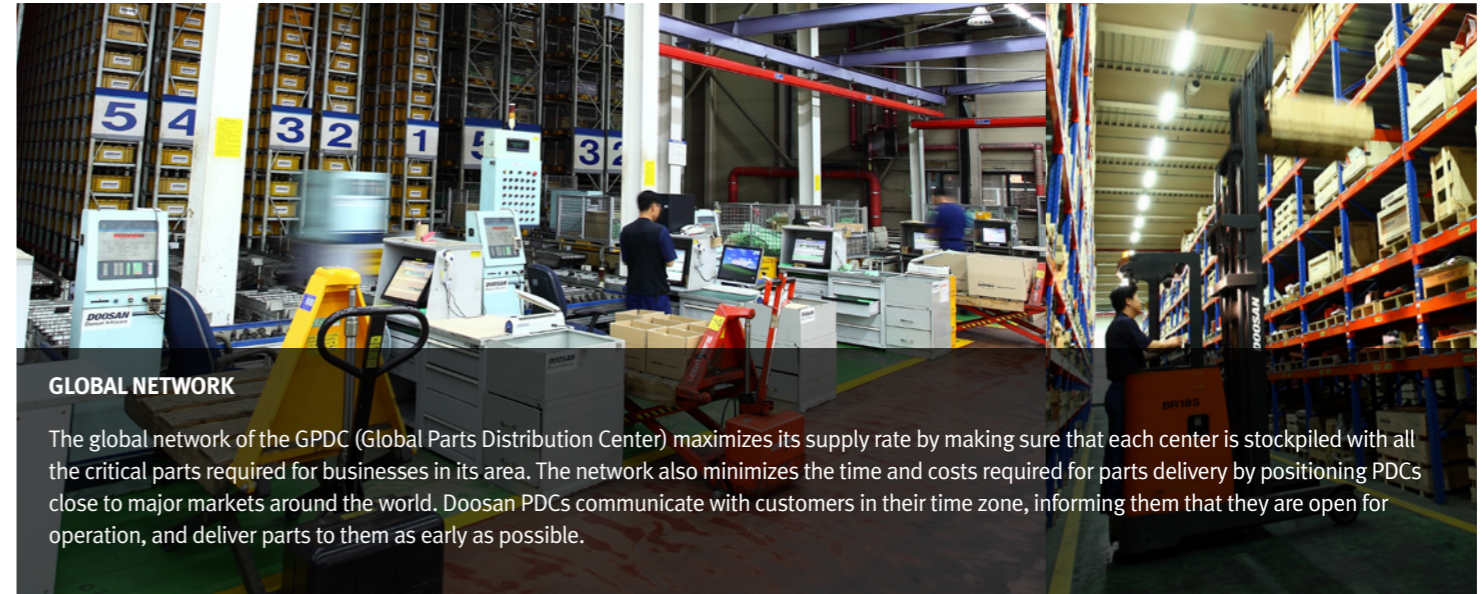
- Better service for customers
- Provide better quality of service
- Maintain machine value
- Better understanding of market needs

### Doosan

- Responsive to customer's voice
- Utilize quality-related field data
- Apply customer's usage profile to developing new machine

## GLOBAL PDC (PARTS DISTRIBUTION CENTER) NETWORK

Doosan provides fast and precise worldwide delivery of genuine Doosan parts through its global PDC (parts distribution center) network.



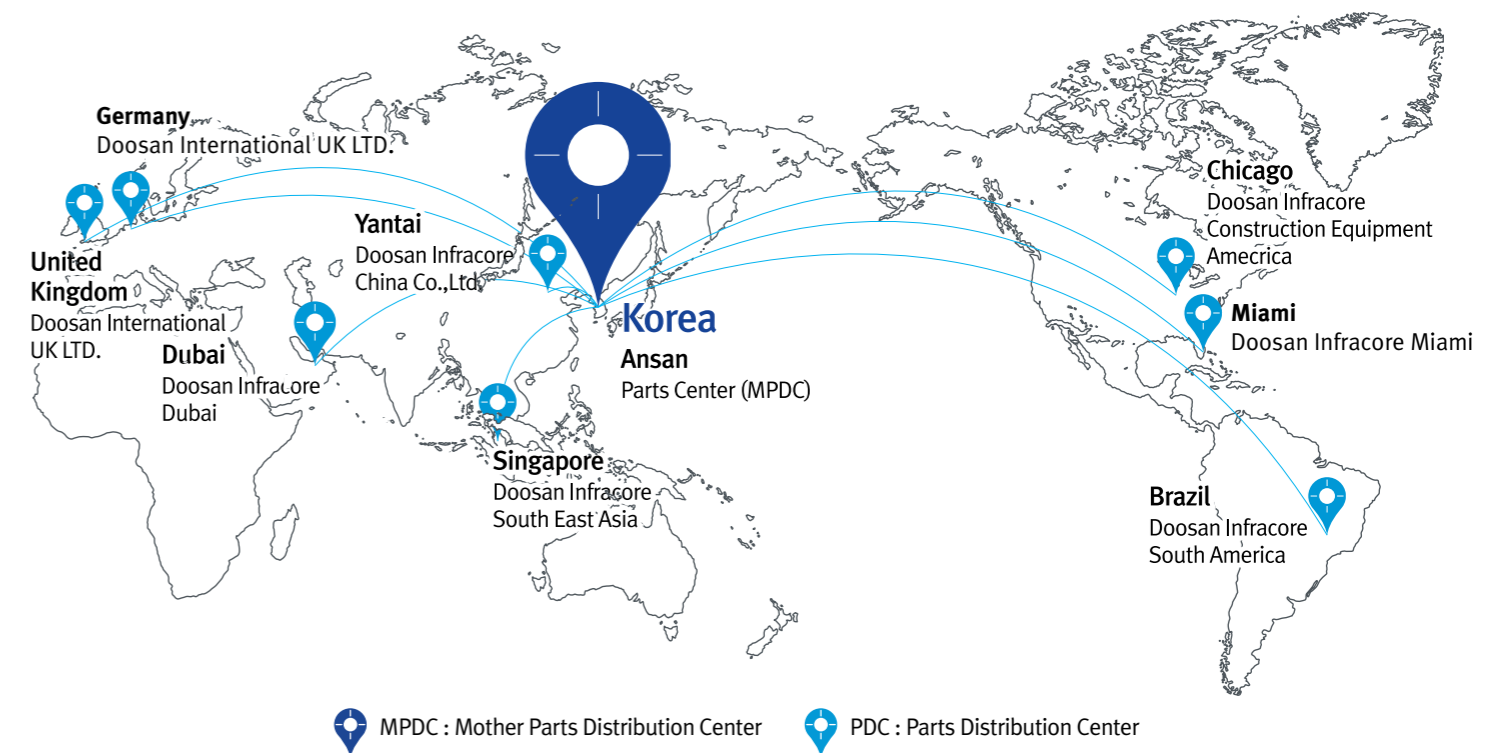
**GLOBAL NETWORK**

The global network of the GPDC (Global Parts Distribution Center) maximizes its supply rate by making sure that each center is stocked with all the critical parts required for businesses in its area. The network also minimizes the time and costs required for parts delivery by positioning PDCs close to major markets around the world. Doosan PDCs communicate with customers in their time zone, informing them that they are open for operation, and deliver parts to them as early as possible.

## The Global Parts

### Distribution Center Network

PDCs had been set up as shown below, including Mother PDC in Ansan, Korea. The eight other PDCs include one in China (Yantai), two in the USA (Chicago and Miami), one in Brazil (Campinas), two in Europe (Germany and the UK), one in the Middle East (Dubai), and one in Asia (Singapore).



## PDC BENEFIT

- Distribution Cost Reduction
- Maximum Parts supply rate
- Shortest distance/time parts delivery
- Real-time service support
- Minimum downtime

# TECHNICAL SPECIFICATIONS

## BODY

### Body volume (without tailgate)

16.8 m<sup>3</sup> – 23.3 yd<sup>3</sup>

### Material

Hardened abrasion-resistant steel plates (400 HB)

### Tilt cylinders

Single stage, double-acting

### Tipping time

Up : 12 sec./Down : 10 sec.

### Body

Designed for exhaust heating

### Sloping frame

Down from the hinge point

### Level capacity (with/without tailgate)

14.2 m<sup>3</sup>/13.6 m<sup>3</sup> – 18.6 yd<sup>3</sup>/17.8 yd<sup>3</sup>

### Heaped capacity (with/without tailgate)

17.8 m<sup>3</sup> / 16.8 m<sup>3</sup> – 23.3 yd<sup>3</sup> / 22.0 yd<sup>3</sup>

### Density index

1.64 t/m<sup>3</sup>

## ELECTRICAL SYSTEM

### Batteries

2 x 12V 140Ah (series connected to give 24V)

### Starter

7.5 HP (5.5 kW)

### Alternator

24 V 100 A

## WEIGHTS

### Empty : Front axle

11,900 kg – 26,235 lb

### Empty : Rear axle

9,800 kg – 25,353 lb

### Max. load : Front axle

16,700 kg – 36,817 lb

### Max. load : Rear axle

34,800 kg – 76,721 lb

### Pay load

28,000 kg – 31 sh tn

### Total weight (loaded)

49,700 kg – 113,317 lb

### Net weight

21,700 kg – 51,588 lb

**NOTE: All weights include a full fuel tank and operator**

## POWER TO WEIGHT RATIO (NET POWER VS TON)

### Empty

12.7 kW/t

### Loaded

5.55 kW/t

## GROUND PRESSURES

### Ground pressures

Standard 23.5 x 25 tyres with 15% sinkage

### Empty : Front axle

114.7 kPa – 16.6 psi

### Empty : Rear axle

55.4 kPa – 8.0 psi

### Loaded : Front axle

159.1 kPa – 23.1 psi

### Loaded : Rear axle

166.0 kPa – 24.1 psi

## CAPACITIES

### Fuel tank

335 l

### Hydraulic system

210 l

### Engine cooling system

45 l

### Transmission

67 l

### Engine crankcase

33.5 l

### Front reduction gear

2 x 11 l

### Tandem housing

115 l

### Rear reduction gear

4 x 7 l

### Adblue® tank

38 l

## ENGINE

### Complies with U.S EPA TIER 2 (EU STAGE II)

Scania DC9, water-cooled, diesel engine with turbo charger and air-to-air intercooler

### Power rating ISO 3046 / ISO 14396 @ 2,100 rpm

375 HP (276 kW) / 362 HP (270 kW)

### No. of cylinders

5 (in line)

### Gross torque

1,873 Nm @ 1,300 rpm

### Cylinder volume

9.3 litres

### Bore diameter x stroke

130 x 140 mm

### Air filter

Dry type

## SPEEDS

### Speeds

Forward – Reverse

### Forward 1 – 2 – 3 – 4 – 5 – 6 – 7 – 8

6 - 8 - 11 - 16 - 23 - 32 - 45 - 55 km/h

### Rear 1 – 2 – 3 – 4

6 - 8 - 11 - 16 km/h

## TRANSMISSION

**Electronically-controlled automatic transmission with retarder. The torque converter has automatic lock-up in all gears.**

ZF 8 EP320

## HYDRAULIC SYSTEM

**1 variable displacement piston pump for steering & tipping for cooling fan, brakes & auxiliaries**

305 l/min @ 2,100 rpm

### Filtration

One return flow filter

### Main safety valves pressures, tipping/steering circuit

280/210 bar

## TIRES

### Standard

23.5 R25 two star radial



# SPECIAL FEATURES

## DA30 SPECIAL FEATURES

### Suspension

- Front : Semi-independent, self-leveling hydro-gas suspension
- Rear : Free-swinging tandem housing

### Articulation hinge and steering

- Articulation hinge with forward-mounted turning ring
- Steering cylinders (two) : Double-acting
- The steering is approved according to ISO 5010
- Max. steering angle : 45°
- Ground-driven emergency steering pump

### Driveline

- Full-time 6 x 6 drive with two transverse differentials and one longitudinal
- Front axle transverse differential : Limited-slip diff lock with 45% locking ratio
- Rear axle transverse differential : Limited-slip diff lock with 45% locking ratio
- Inter-axle longitudinal differential:
  - Torque-proportioning differential, integrated into the ZF transmission
  - Torque distribution :
    - 1/3 to the front axle
    - 2/3 to the rear axle
    - 100 % lockable
- Tandem housing : Gear driven, free-swinging  
Provides equal drive to rear wheels and ensures the best possible ground contact – whatever the ground conditions

### Brake system

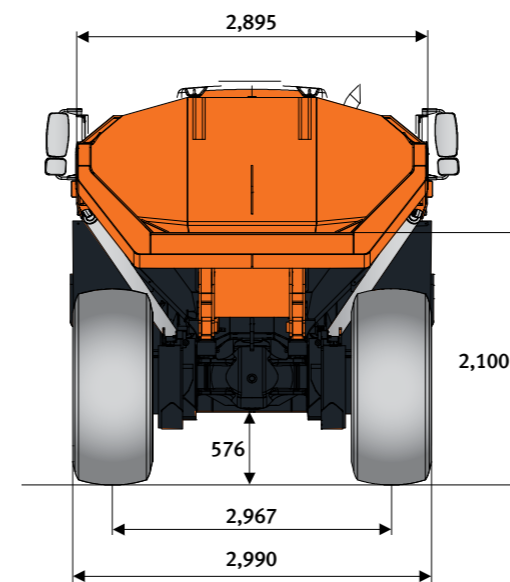
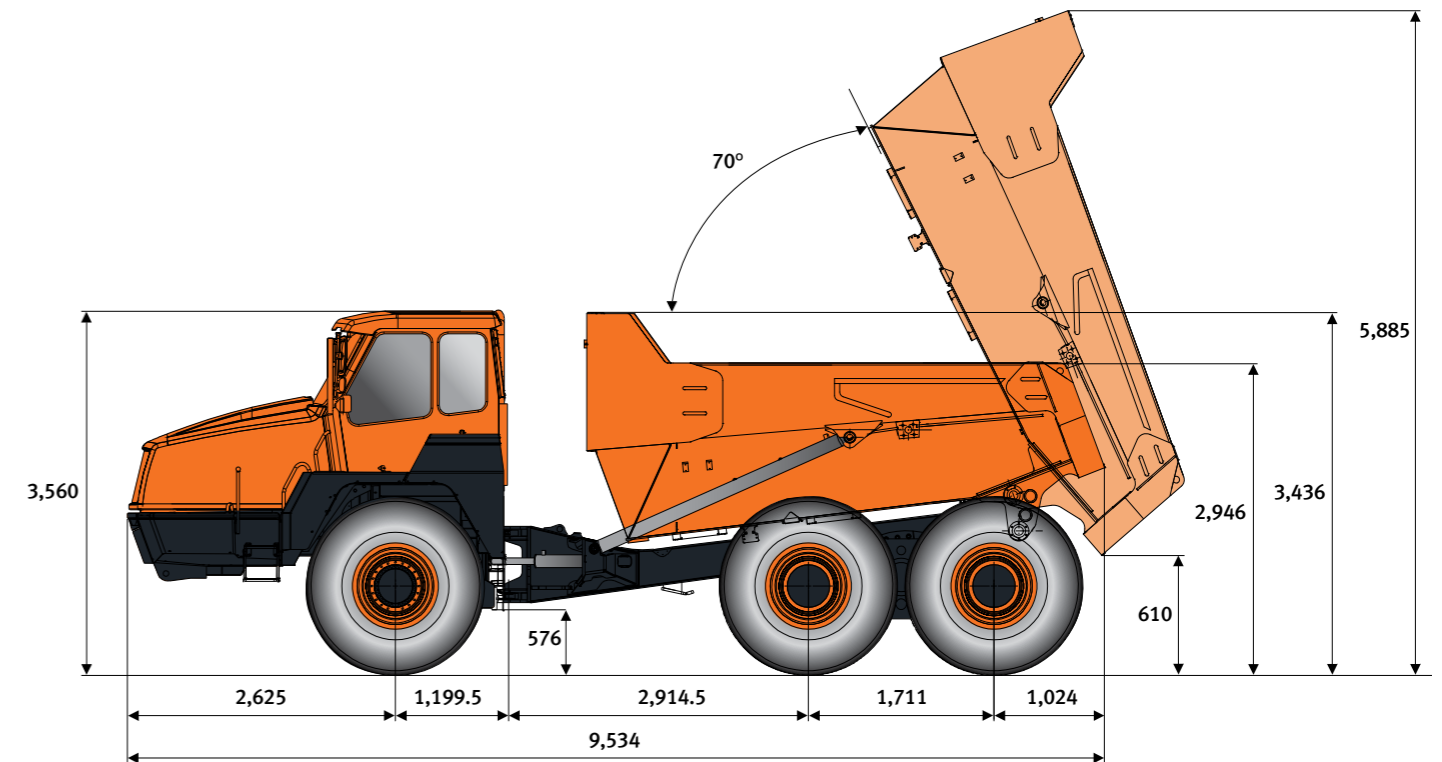
- Dual circuit braking system acting on all six wheels
- Approved according to ISO 3450
- All hydraulic-operated brakes with enclosed oil-cooled wet multiple discs on four hubs (braking force distributed to two hubs by tandem gear wheels)
- Spring actuated hydraulic released parking brake, mounted on driveline shaft
- Max. gradient, parking brake : 20°
- Automatic engine brake as standard
- Automatic transmission retarder as standard

### Cab

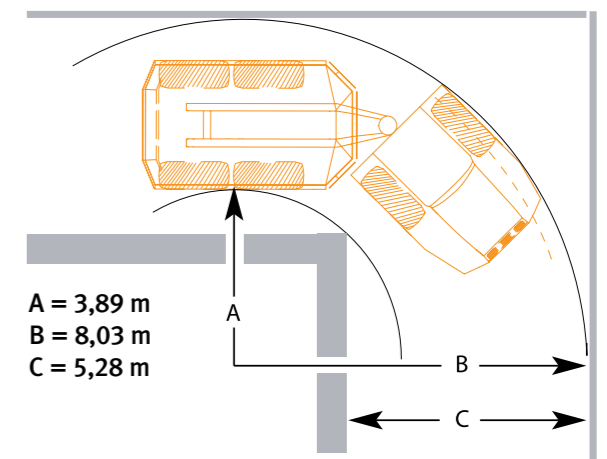
- Approved to ROPS/FOPS standards (ISO 3471, ISO 3449)
- Low interior sound level : 72 dB(A) (ISO 6395)
- External sound level : 108 dB(A) (ISO 6396)
- The cab is centrally located on rubber mountings
- Hand and arm vibrations are less than 2.5 ms<sup>2</sup> (ISO 5349-2)
- Whole body vibration is less than 0.5 ms<sup>2</sup> according to ISO 2631-1
- Superior visibility - for safer operation
- Superior operating controls location
- Adjustable suspended operator seat
- Adjustable steering column
- Climate control – Heater and air conditioning
- Tilting for service access

# DIMENSIONS

Unit: mm



DA30 width with  
750/65 R25 tyres: 3208 mm



Turning radius according to ISO 7457: 7.68 m

# STANDARD AND OPTIONAL EQUIPMENT

## STANDARD EQUIPMENT

### Engine

- Scania, Tier2 compliant, water-cooled, diesel engine with turbo charger and air-to-air intercooler

### Hydraulic System

- 1 variable displacement piston pump for steering & tipping
- One return flow filter

### Safety

- Gradient meter with anti-flip-over protection system
- Payload meter & cycle counter
- Wet disc brake
- Rear-view camera
- Hammer for emergency escape

### Other

- Engine exhaust brake
- Transmission retarder brake
- Automatic lubrication system
- Mud flaps
- Towing hook, front and rear
- Doosan connect telematic system

### Cabin and Interior

- Armrest at operator seat
- Headrest at operator seat
- Safety belt at operator and instructor seat
- Adjustable steering column
- All instrumentation in LCD display
- Cigarette lighter and ashtray
- 12V charging point
- Retractable roller sunblind
- Tinted safety glass
- Sliding window (left & right side)
- Windshield wiper and washer
- Mirror
- Protection for rear window
- Emergency steering, ground-driven
- Radio/CD/MP3
- Work light front, at the top of the cab
- Cab tilting system
- Emergency shutdown switch
- Anti-slip steps & platform
- Cool box compartment
- Storage room
- Electronic climate control
- Front light protector (Lexan)
- High-comfort seat (vertical and longitudinal suspension)
- Heated operator seat
- Heated mirror
- Electrically adjustable mirrors

## OPTIONAL EQUIPMENT

### Other

- Tail gate
- Webasto heating system (heat up the cooling system)
- Electrical engine heater
- Fire extinguisher
- First aid kit
- Beacon
- Light bar
- Speed limitation
- Work light kit (rear and front)
- Work light kit (rear and front) LED
- Tool kit
- Warning triangle
- Fast fill
- White noise alarm
- Tire pressure monitoring system (may not be available with all tires)
- Electric diesel refueling pump

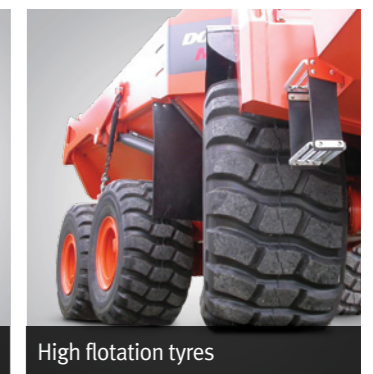
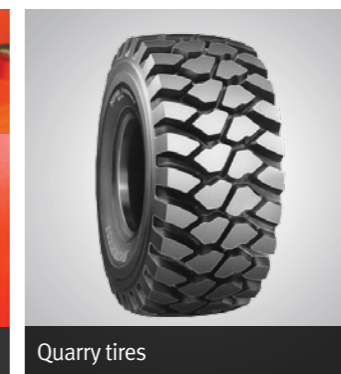
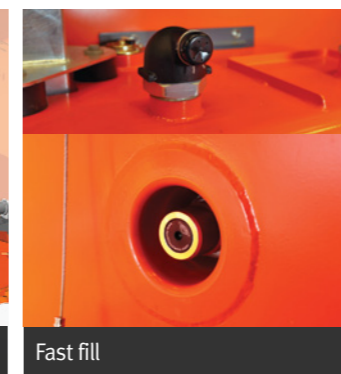
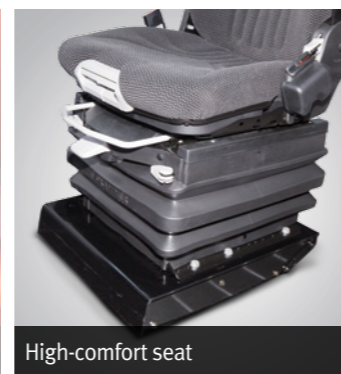
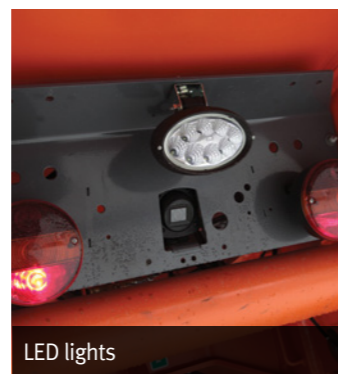
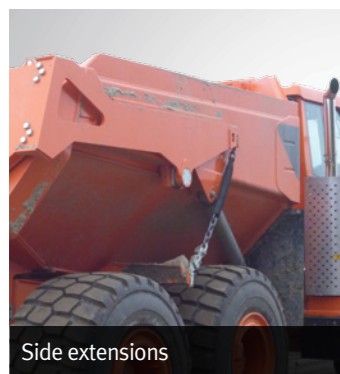
### Safety

- Hand rails on the fenders
- Seat belt green warning light
- Blue or orange flashing reverse light
- White noise alarm

### Tires options

- Quarry
- Earthmoving
- Flotation tires

Some of these options may be standard in some markets. Some of these options may not be available for certain markets. Please check with your local DOOSAN dealer for more information about availability or to adapt your machine to your application needs.



# Doosan is

Since 1896, Doosan, the oldest company in Korea, has evolved with its people. The company grew up rapidly for last 10 years with reputation. For human-oriented vision, Doosan has been building constructions, energy, machines, infra structures globally. As a global leader of infra structure, Doosan continues its vision to make human-oriented future.

First in Korea, Doosan self-developed excavators in 1985 and continued building versatile construction machines including excavators, wheel loaders, articulated dump trucks to execute its human-oriented philosophy. Doosan became a global leader of heavy construction machine industry by achieving global sales line, producing line, and distribution line. Along with large production bases in Korea, China, USA, Belgium, Czech, Brazil, Doosan has 1400 dealer networks and Doosan is providing reliable products and trusted solutions for your stable business at no risk.



**Doosan Infracore Korea Office (HQ)**  
27F, Doosan Tower, 275, Jangchungdan-ro,  
Jung-gu, Seoul, Korea(04563)  
Tel : 82 2 3398 8114

[www.doosaninfracore.com/ce/](http://www.doosaninfracore.com/ce/)